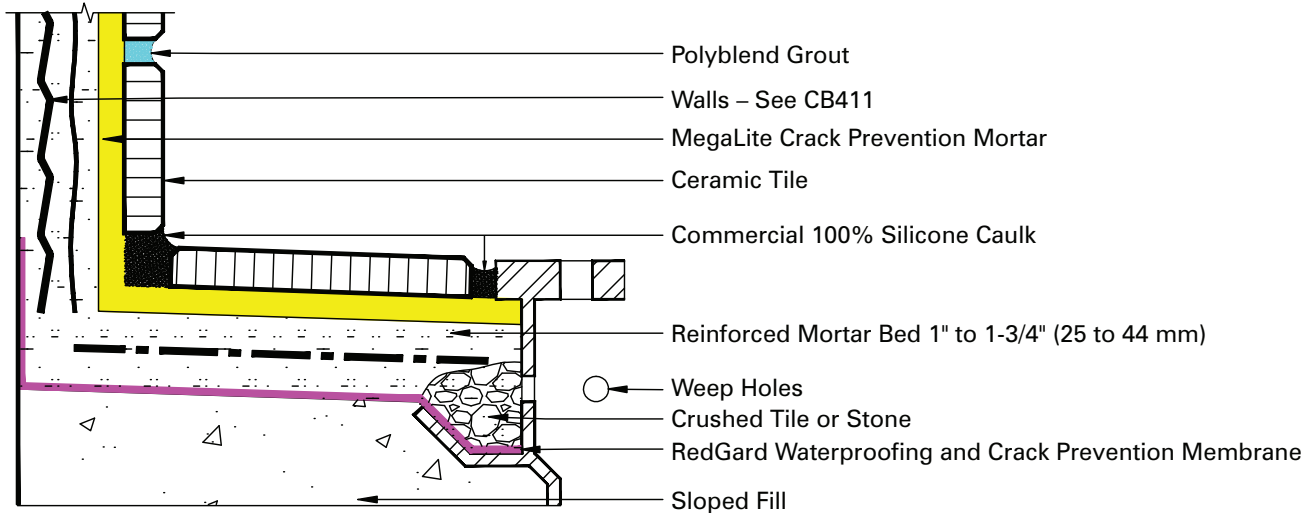


# SHOWER RECEPTORS, WALLS

## Wood or Metal Studs

### Cement Mortar



### Qualifies for Lifetime Warranty

#### Waterproofing Membrane Options:

- RedGard® Waterproofing and Crack Prevention Membrane (Liquid Applied Membrane)
- Custom® 9240 Waterproofing and Crack Prevention Membrane (Fabric Reinforced Strength)

#### Mortar Options:

- MegaLite® Crack Prevention Mortar (Flexible and Sag Resistance)
- MegaLite® Rapid Setting Crack Prevention Mortar (for Rapid Installation of Tile)

#### Grout Options:

- Polyblend® Grout (Polymer Modified Tile Grout)
- Prism® SureColor® Grout (Shade and Efflorescence Control)

#### Sealant Option:

- Commercial 100% Silicone Caulk (for Movement Joints in Traffic Areas)

These drawings have been taken from Tile Council of America's (TCA) Handbook for Ceramic Tile Installation and are also compatible with the drawings in Terrazzo, Tile and Marble Association of Canada's (TTMAC) Handbook. For your convenience, Custom Building Products options are substituted for TCA's and TTMAC's generic product descriptions. Please refer to the handbooks for complete information.

