

# RAPID SETTING SHOWER INSTALLATION USING KBRS HARDCURB

Custom Building Products' installation materials are fully warranted using KBRS HardCurb® and other [KBRS Shower Systems](#). Follow the step-by-step instructions below for a CUSTOM® rapid-setting system.

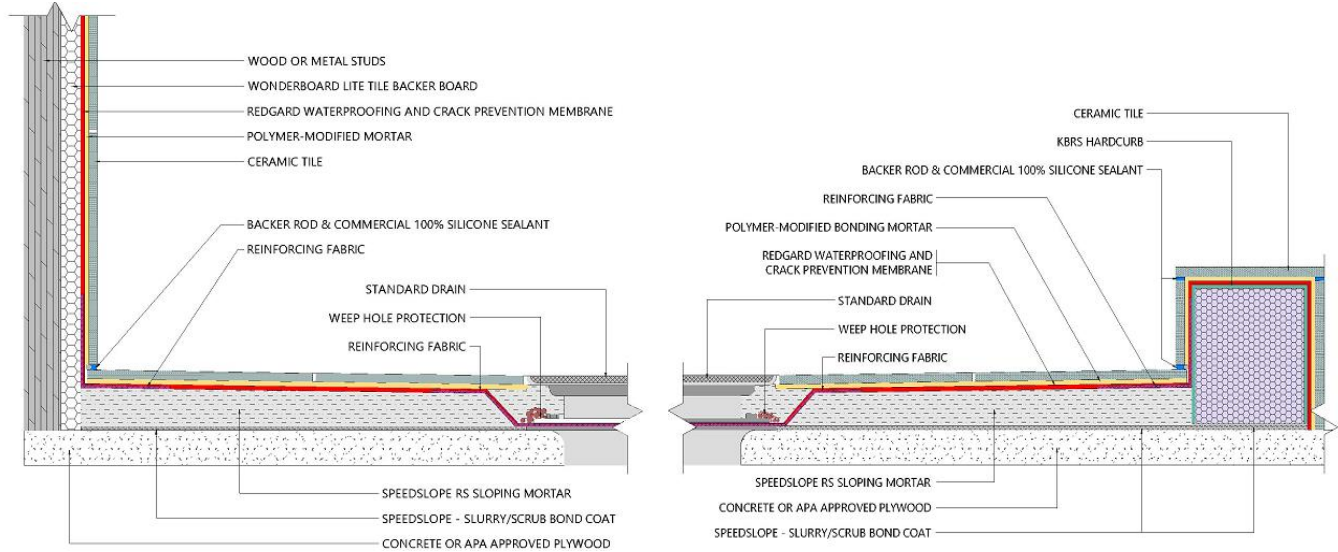


1. When using a tile backerboard such as [WonderBoard® Lite Backerboard](#), install board from the floor to the desired tile height in the shower area. Tape all joints and fill depressions from fasteners using [ProLite® Rapid Setting Tile & Stone Mortar](#) or [SpeedSet™ Fortified ThinSet Mortar](#). Use 2" (5cm) alkali resistant tape on board joints.
  2. Remove dust or any other bond-inhibiting materials and contaminants from the shower floor substrate.
  3. Dry fit the HardCurb® to ensure proper length (cut-to-fit, if required).
  4. Mix a small amount of CUSTOM® [SpeedSlope® Rapid Setting Sloping Mortar](#) to a thinset consistency and using a 3/4" U-notched trowel, apply it to the substrate where the curb will be placed.
  5. Firmly embed HardCurb® into the mortar to ensure proper bond. Level curb from side to side then tilt curb slightly inward, 3/32"-1/8" (2.38 -3.175mm), to provide the required pitch to direct water to the mortar bed. Remove excess mortar using a margin trowel.
  6. Apply KBRS [ShowerSeal® Polyurethane Sealant](#) or [CUSTOM® Commercial 100% Silicone Sealant](#) to all gaps on either side of the HardCurb®.
  7. Mix additional SpeedSlope® in a thinset consistency for use as the mortar bed bond coat. Brush or trowel the SpeedSlope® bond coat to the substrate. **DO NOT USE THINSET ADHESIVE MORTARS TO ADHERE SpeedSlope® DRYPACK TO A SUBSTRATE. ALWAYS PLACE DRY PACK INTO BOND COAT BEFORE IT SETS.**
  8. Mix the SpeedSlope® mortar bed to dry-pack with 2.5-3.0 quarts (2.36-2.84L) per bag. Five to six 50lb (22.7kg) bags should complete a 3'x5' (1m x 1.5m) mortar bed. For the fastest mixing method, use a [Bucket Mortar Mixer](#).
  9. Compact and finish the SpeedSlope® creating a proper slope to drains in either method shown in diagrams below – the CB421 divot to drain clamp or linear drain slope and allow SpeedSlope® to cure 1 ½ - 2 hours hrs. Cure time is affected by temperature, humidity and the amount of water used.
  10. When mortar bed is firm, apply [RedGard® SpeedCoat® Waterproofing Membrane](#) per instructions to all surfaces to be tiled. Use [CUSTOM® Waterproofing Reinforcing Tape](#) where mortar bed meets HardCurb® and wall intersections. (*Backerboard that is taped previously does not require additional fabric.*) If flood testing, allow SpeedCoat® to dry sufficiently, typically 2 hours.
- When using the CB421 divot method, allow SpeedCoat® to set ~1-2 hours then fill divot with SpeedSlope® using bond coat mixture ratio.
11. Tiles may be set immediately after SpeedCoat® and SpeedSlope® cures using a CUSTOM® polymer-modified thin-set mortar. For rapid setting options use [ProLite® Rapid Setting Tile & Stone Mortar](#) or [SpeedSet™ Fortified ThinSet Mortar](#).
  12. Use rapid-setting [Prism® Ultimate Performance® Grout](#) and fill perimeter and changes of plane with color-matched [CUSTOM® Commercial 100% Silicone Sealant](#) to finish the installation. Allow 72 hours before using shower.
- Refer to individual product Technical Data Sheets for complete instructions and limitations. For technical support, contact Custom Building Products (800) 272-8786 [CONTACT US](#)

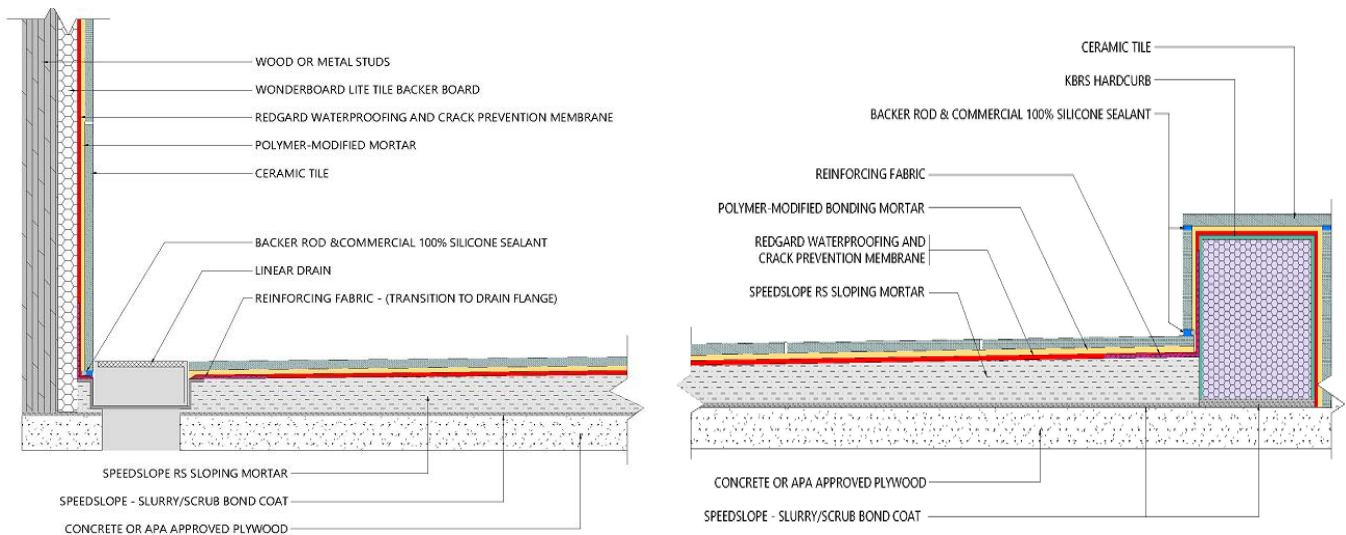


# RAPID SETTING SHOWER INSTALLATION USING KBRS HARDCURB

## CB421 Standard Circular Drain – Divot Method



## Linear Drain Method



The information in this bulletin is presented in good faith, but no warranty, express or implied, is given nor is freedom from any patent in as much as any assistance furnished by CUSTOM with reference to the safe use and disposal of its products provided without charge. Custom Building Products assumes no obligation or liability therefore, except to the extent that any such assistance shall be given in good faith.

TB111 12/21

