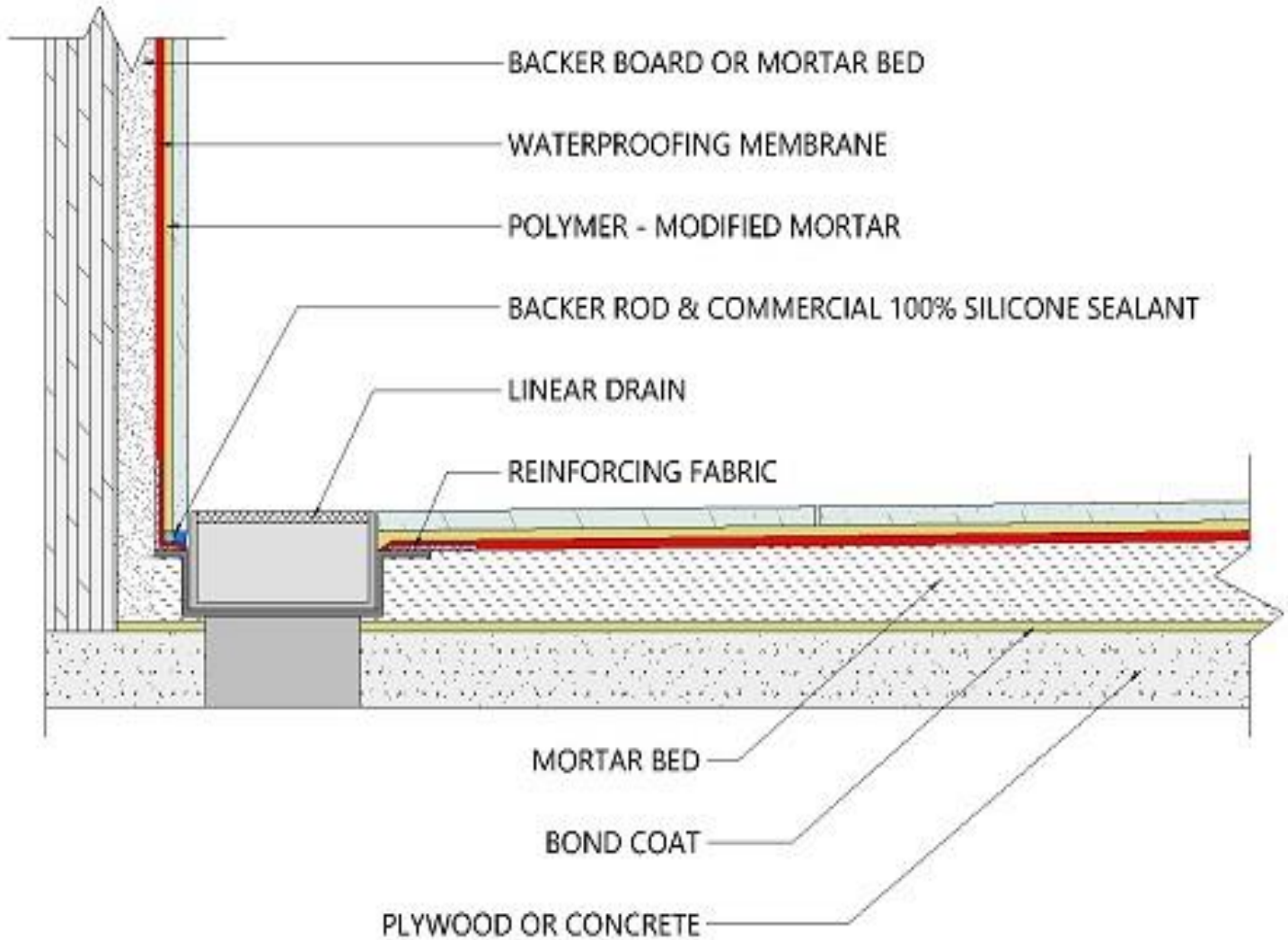


All tile assemblies available on the CUSTOM® website should be used as tools in combination with the [TCNA Handbook for Ceramic, Glass and Stone Tile Installation](#) or [TTMAC Specifications Guide 09 30 00 Tile Installation Manual](#). Refer to Product Technical Data Sheet for complete installation instructions and product limitations. Contact CUSTOM® Architectural Representatives or Technical Services for additional questions and support.



NOTE: Illustrations shows the necessary components of the tile installation method, including the substrate. This has not been drawn to scale. It is intended to clearly identify and label each component and its placement in the assembly.

