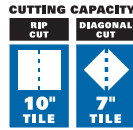
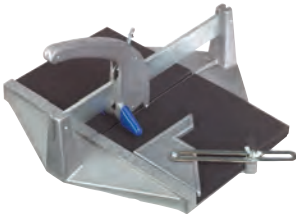


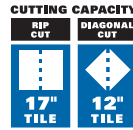
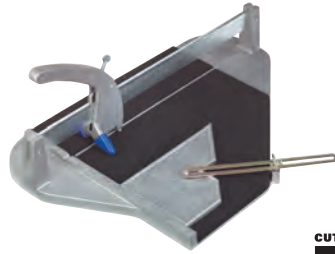
Cut & Mark Tools



PROBILT SERIES™ Slide Bar Tile Cutter

- Die-cast aluminum base
- Tile sleeves protect tile
- 1/2" carbide scoring wheel
- Interchangeable handle with springs

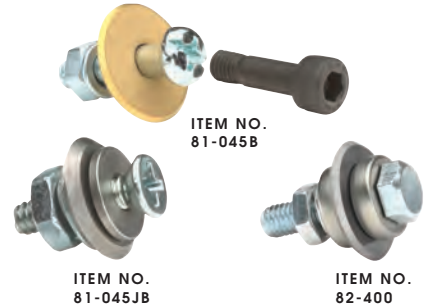
CUTTING CAPACITY			
ITEM NO.	RIP	DIAGONAL	PKG.
82-10	10"	7" Tile	1



PROBILT SERIES™ Slide Bar Tile Cutter

- Die-cast aluminum base
- Tile sleeves protect tile
- 1/2" carbide scoring wheel
- Interchangeable handle with springs

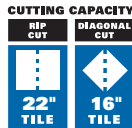
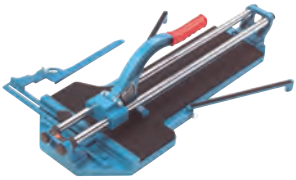
CUTTING CAPACITY			
ITEM NO.	RIP	DIAGONAL	PKG.
82-17	17"	12" Tile	1



Replacement Scoring Wheels

- Hardware included

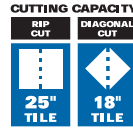
ITEM NO.	DESCRIPTION	PKG.
81-045JB	7/8" Scoring Wheel with Bearings for Miki Tile Cutters	6
82-400	1/2" Carbide Scoring Wheel for ProBiltSeries Tile Cutters	12
81-045B	7/8" Carbide Scoring Wheel	12



Ishii® Two-Bar Tile Cutter

- 7/8" carbide scoring wheel
- Sealed bearings
- 25/32" (3/4") chrome, hardened steel bars
- Curved handle

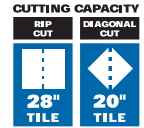
CUTTING CAPACITY			
ITEM NO.	RIP	DIAGONAL	PKG.
81-050J	22"	16" Tile	1



Ishii® Two-Bar Tile Cutter

- 7/8" carbide scoring wheel
- Sealed bearings
- 25/32" (3/4") chrome, hardened steel bars
- Curved handle

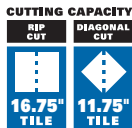
CUTTING CAPACITY			
ITEM NO.	RIP	DIAGONAL	PKG.
81-600JR	25"	18" Tile	1



Ishii® Two-Bar Tile Cutter

- 7/8" carbide scoring wheel
- Sealed bearings
- 25/32" (3/4") chrome, hardened steel bars
- Curved handle

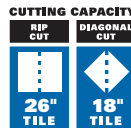
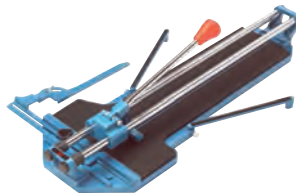
CUTTING CAPACITY			
ITEM NO.	RIP	DIAGONAL	PKG.
81-800JR	28"	20" Tile	1



Ishii® Two-Bar Tile Cutter

- 7/8" carbide scoring wheel
- Sealed bearings
- 25/32" (3/4") chrome, hardened steel bars

CUTTING CAPACITY			
ITEM NO.	RIP	DIAGONAL	PKG.
81-045J	16.75"	11.75" Tile	1



Ishii® Two-Bar Tile Cutter

- 7/8" carbide scoring wheel
- Sealed bearings
- 25/32" (3/4") chrome, hardened steel bars

CUTTING CAPACITY			
ITEM NO.	RIP	DIAGONAL	PKG.
81-600J	26"	18" Tile	1