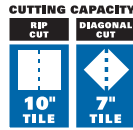
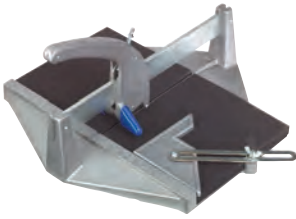


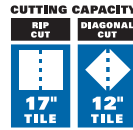
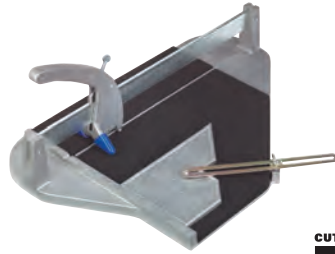
# Cut & Mark Tools



## PROBILT SERIES™ Slide Bar Tile Cutter

- Die-cast aluminum base
- Tile sleeves protect tile
- 1/2" carbide scoring wheel
- Interchangeable handle with springs

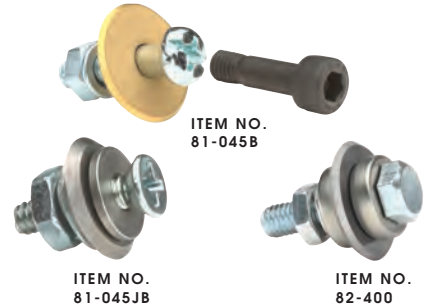
CUTTING CAPACITY			
ITEM NO.	RIP	DIAGONAL	PKG.
82-10	10"	7" Tile	1



## PROBILT SERIES™ Slide Bar Tile Cutter

- Die-cast aluminum base
- Tile sleeves protect tile
- 1/2" carbide scoring wheel
- Interchangeable handle with springs

CUTTING CAPACITY			
ITEM NO.	RIP	DIAGONAL	PKG.
82-17	17"	12" Tile	1



ITEM NO.  
81-045B

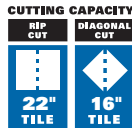
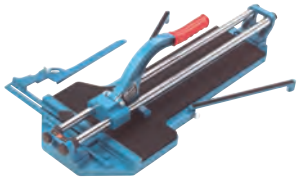
ITEM NO.  
81-045JB

ITEM NO.  
82-400

## Replacement Scoring Wheels

- Hardware included

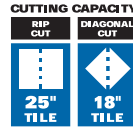
ITEM NO.	DESCRIPTION	PKG.
81-045JB	7/8" Scoring Wheel with Bearings for Miki Tile Cutters	6
82-400	1/2" Carbide Scoring Wheel for ProBiltSeries Tile Cutters	12
81-045B	7/8" Carbide Scoring Wheel	12



## Ishii® Two-Bar Tile Cutter

- 7/8" carbide scoring wheel
- Sealed bearings
- 25/32" (3/4") chrome, hardened steel bars
- Curved handle

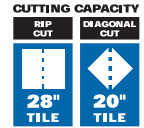
CUTTING CAPACITY			
ITEM NO.	RIP	DIAGONAL	PKG.
81-050J	22"	16" Tile	1



## Ishii® Two-Bar Tile Cutter

- 7/8" carbide scoring wheel
- Sealed bearings
- 25/32" (3/4") chrome, hardened steel bars
- Curved handle

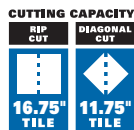
CUTTING CAPACITY			
ITEM NO.	RIP	DIAGONAL	PKG.
81-600JR	25"	18" Tile	1



## Ishii® Two-Bar Tile Cutter

- 7/8" carbide scoring wheel
- Sealed bearings
- 25/32" (3/4") chrome, hardened steel bars
- Curved handle

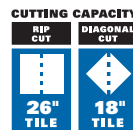
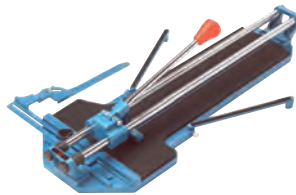
CUTTING CAPACITY			
ITEM NO.	RIP	DIAGONAL	PKG.
81-800JR	28"	20" Tile	1



## Ishii® Two-Bar Tile Cutter

- 7/8" carbide scoring wheel
- Sealed bearings
- 25/32" (3/4") chrome, hardened steel bars

CUTTING CAPACITY			
ITEM NO.	RIP	DIAGONAL	PKG.
81-045J	16.75"	11.75" Tile	1



## Ishii® Two-Bar Tile Cutter

- 7/8" carbide scoring wheel
- Sealed bearings
- 25/32" (3/4") chrome, hardened steel bars

CUTTING CAPACITY			
ITEM NO.	RIP	DIAGONAL	PKG.
81-600J	26"	18" Tile	1

# Cut & Mark Tools



WATER PUMP SPECIFICATIONS			
Volts	115	H.P.	1/100
Amps	.6	U.L.	Yes
Watts	30	CSA	Yes



## Water Pump

- 210 gallons per hour at 1' lift, 1 15V, 60 Hz
- Low maintenance direct drive design
- Not oil-filled
- Environmentally safe

ITEM NO.	DESCRIPTION	PKG.
84-G150A	Water Pump	1



## Water Heater

- Under extreme cold conditions, quickly warms tile saw water
- Heats 1 gallon of room temperature water to 90° in 10 minutes
- UL approved

ITEM NO.	DESCRIPTION	PKG.
80-3150	11-1/2" Water Heater	1



## Rubbing Stone

- Smooth rough edges on freshly cut tile
- Use to dress diamond blades
- White stones will not mark tile

ITEM NO.	DESCRIPTION	PKG.
83-821A	8" x 2" x 1" Rubbing Stone	6



## PROBILT SERIES™ Tile Nippers

- Carbide tipped
- Vinyl grips
- V-spring for smooth action

ITEM NO.	DESCRIPTION	PKG.
83-GT28	8" V-Spring, Finger Grip, Offset Jaws	6



## PROBILT SERIES™ Hole Saw

- Cutting material: diamond
- Best for cutting: ceramic tile, marble and underlayments

ITEM NO.	DESCRIPTION	PKG.
82-600	1-3/8" Diameter Hole Saw	4



## Hole Saw

- Cutting material: carbide grit
- Best for cutting: ceramic tile and underlayments

ITEM NO.	DESCRIPTION	PKG.
82-356	1-3/8" Diameter Hole Saw	6



## Tape Measure

- 25' SoftGrip™ tape measure
- Graduated in 1/16" markings

ITEM NO.	DESCRIPTION	PKG.
109-25G	25' Tape Measure	12



## Tile Markers

- Easily mark on any slick surface — tile, glass or stone
- Marks will remain on tile when cutting with a wet saw; then easily wipe clean

ITEM NO.	DESCRIPTION	PKG.
39-60	Tile Markers Assorted Colors (6 Per Pkg.)	12



## Level

- Unbreakable, solid core acrylic vials
- Shock-resistant, plastic end caps
- Milled bottom finish
- Powder-coated finish, easy-to-clean
- Extruded aluminum

ITEM NO.	DESCRIPTION	PKG.
33-B48H	48" Level with Hand Holes	3