

# CUSTOM® SpeedSlope® - Rapid Setting Sloping Mortar



## 1. Product Name

CUSTOM® SpeedSlope® - Rapid Setting Sloping Mortar

## 2. Manufacturer

Custom Building Products  
 Technical Services  
 11450 Technology Circle  
 Johns Creek, GA 30097  
 Customer Support: 800-272-8786  
 Technical Services: 800-282-8786  
 Email: contactus@cbpmail.net  
 custombuildingproducts.com

## 3. Product Description

SpeedSlope® is a rapid setting, rapid hardening, polymer-modified, pre-blended, cement based mortar bed and sloping mortar for flattening, leveling, and ramping up to 3" on horizontal substrates; up to 5" thick in confined areas such as trenches. May be also used for walls and countertops, SpeedSlope® sets to a walkable hardness within one to two hours for installation of ceramic tile & natural stone tile flooring.

Formulated for dimensional stability and exceptional bond strength, SpeedSlope® is ideal for pre-sloping under waterproofing membranes and mortar beds in shower applications, for countertops and patching.

## Key Features

- Pre-blended, polymer modified mortar bed – just add water and mix
- Rapid setting – allows tile setting in 1-2 hours
- Meets requirements of ANSI A108.1
- Excellent for shower pre-slopes
- Can be used in wet and dry applications
- Perfect for deep floor patches
- Exceptionally smooth finish
- 4:1 blended cement base suitable for shower receptors

## Suitable Substrates

- Interior or exterior concrete and masonry surfaces
- Existing finishes and substrates with suitable preparation or priming
- Exterior grade plywood with lath (dry applications only)
- RedGard SpeedCoat® Rapid Curing Waterproofing Membrane
- RedGard® Waterproofing and Crack Prevention Membrane

## Limitations to the Product

- SpeedSlope® is an underlayment and not recommended as a permanent wear surface
- Limited to ~30 minutes of working time (roughly 3' x 5' area per placement)
- Some flooring finishes may require longer cure times to obtain lower moisture levels
- Do not apply directly over wood, metal, fiberglass, plastic and OSB panels, lightweight concrete, gypsum underlayment, particle board, hardwood or Parquet floors.

## Packaging

50 lb (22.68 kg) Bags

## 4. Technical Data

### Applicable Standards

American National Standards Institute (ANSI)

- ANSI A108.1 of the American National Standards for the Installation of Ceramic Tile

ASTM International (ASTM)

- ASTM C579 Standard Test Method for Compressive Strength of Hydraulic Cement Mortars (Using 2-in. or [50-mm] Cube Specimens)
- ASTM C627 Standard Test Method for Evaluating Ceramic Floor Tile Installation Systems Using the Robinson-Type Floor Tester

Resilient Floor Covering Institute (RFCI)

- Recommended Work Practices for Removal of Resilient Floor Coverings

Tile Council of North America (TCNA)

- TCNA Handbook for Ceramic Tile Installation, TCNA Method EJ171

## Technical Chart

Test	Specification	Duration	2.75 Qts	3.75 Qts
Compressive Strength (psi)	ASTM C579 Method B	4 Hours	>1800 psi	>1200 psi
		24 Hours	>2500 psi	>1500 psi
		7 Days	>4000 psi	>2500 psi
		28 Days	>4000 psi	>3000 psi

Density 4.4-5.2 lbs per foot at 1/2" thick

## Environmental Consideration

Custom® Building Products is committed to environmental responsibility in both products produced and in manufacturing practices. Use of this product may contribute to LEED® certification.

## 5. Instructions

### General Surface Prep

Surfaces must be structurally sound, clean, dry and free from grease, oil, dirt, curing compounds, efflorescence, sealers, adhesives or any other contaminant that would prevent a good bond. Glossy or painted surfaces must be sanded, stripped and cleaned of waxes, dirt or any contaminants. Concrete must be cured 28 days and accept water penetration. Concrete must not be subject to

# CUSTOM® SpeedSlope® - Rapid Setting Sloping Mortar

hydrostatic pressure. Concrete slabs should have a broomed or brushed finish or be mechanically prepared to enhance the bond. Plywood flooring must be structurally sound and meet all ANSI and deflection requirements. Expansion joints should never be bridged with setting or mortar bed materials. Do not sand flooring materials containing asbestos. Ambient temperature, surfaces and materials should be maintained at a temperature above 50° F (10° C) or below 90° F (32° C) for 72 hours.

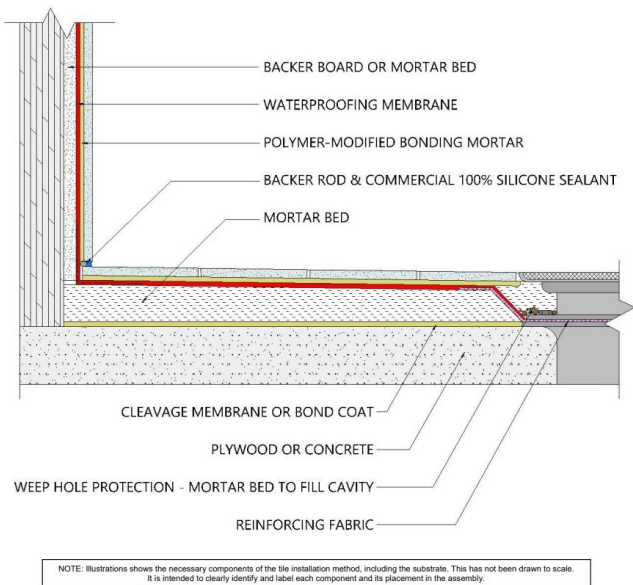
## Bonding To Concrete Surfaces

### Mortar Beds

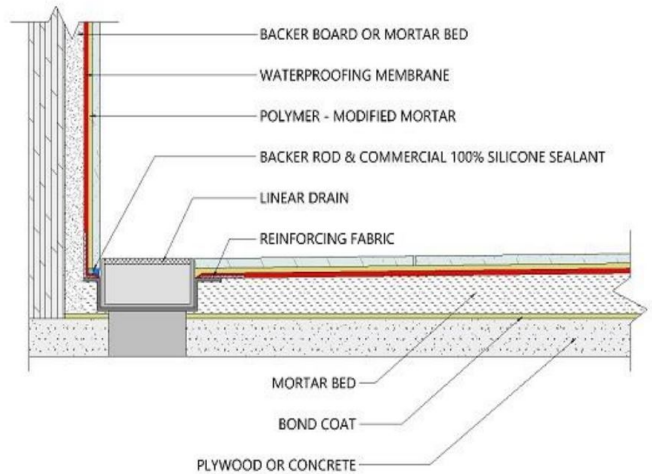
Follow ANSI A108.1 B for the installation of ceramic tile with thick bed mortar. Note: Drying or curing time is affected by ambient and surface temperatures and humidity. For a bonded mortar bed dry-pack application, SpeedSlope® must be bonded with a slurry/scrub coat consisting of 1/4 bag (12.5 lbs) of SpeedSlope® mixed with 1qt of water. DO NOT USE ANY TYPE OF THIN SET ADHESIVE MORTAR AS A BOND COAT TO THE SUBSTRATE WHEN USING SPEEDSLOPE®. Work the SpeedSlope® bond coat into the substrate and spread to a ≥1/8" thickness, then immediately compact the SpeedSlope® dry-pack mixture (2.5 — 3.0 qts water to 50 lb mortar) into the bond coat and tamp well to combine. Contour and smooth trowel SpeedSlope® to finish. For non-bonded mortar-bed applications, compact SpeedSlope® dry-pack mix directly onto cleavage membrane. Contour and smooth trowel to finish. Use 16 gauge, 2" x 2" galvanized welded wire-reinforcing per ANSI A108 recommendations and when required in TCNA installation details. For large applications, contact Technical Services for valuable tips and questions on installing a rapid-setting mortar bed.

## Shower Receptor Installation

### Membrane, Mortar Bed & Circular Drain



### Membrane, Mortar Bed & Linear Drain



NOTE: Download the illustrated installation details referenced above at the links below:

- Membrane, Mortar Bed, and Circular Drain (CB421) ([PDF](#)) ([DWG](#))
- Membrane, Mortar Bed, and Linear Drain ([PDF](#)) ([DWG](#))

## Bonding to Plywood and OSB Surfaces

Plywood floors, including those under resilient flooring, must be structurally sound and must meet all ANSI A108.01 Part 3.4 requirements. Follow TCNA F141 or F145 guidelines for the installation of the thick bed mortar over plywood subfloor.

## Movement Joint Placement

Expansion joints and cold joints, as described in ANSI A108.01, should never be bridged with setting material. They must be brought through the tile assembly including the mortar bed and filled with an appropriate elastomeric sealant, such as CUSTOM's® 100% Silicone. Allow for perimeter movement. Contact CUSTOM's® Technical Services for the proper treatment of control or saw cut joints. Refer to TCNA EJ171, F125 and F125A.

## Mixing Procedures

**Slurry/Scrub Bond Coat for Dry-pack Mortar Bed** - Combine 1/4 bag, (12.5lbs) of SpeedSlope® powder mixed with 1qt of water in a clean mixing vessel. Mix material until all powder is thoroughly wet out and uniform.

**Drypack** - Combine 50lbs of SpeedSlope® powder with 2.5 to 3.0 quarts of water in a clean mixing vessel. Mix material until all powder is thoroughly wet out and uniform. Material should be free of clumps and hold shape when squeezed together by hand.

**Plastic Sloping Mortar** - Combine 50 lb of SpeedSlope® powder with 3.5-4.0 quarts of water in a clean mixing vessel and mix to a uniform lump free consistency. Mix with a heavy duty drill with a square cage mixing paddle until lump free - approximately 2 minutes. High gear is needed to properly mix dry-pack and plastic consistencies. Alternatively a mortar mixer may be used with typical mix times of 2 to 3 minutes, but do not over mix. Rinse paddle between batches.

## Application of Product

Prior to application to absorptive substrates, damp sponge the area to prevent excessive moisture loss to the substrate. Do not saturate the surface or leave standing water. Alternatively, porous substrates may be primed using CUSTOM® MBP® or CUSTOM® TechPrime A®

# CUSTOM® SpeedSlope® - Rapid Setting Sloping Mortar

or other approved CUSTOM® primer according to their respective directions.

**IMPORTANT NOTE:** For a bonded mortar bed dry-pack application, SpeedSlope® must be bonded with a slurry/scrub coat consisting of 1/4 bag (12.5 lbs) of SpeedSlope® mixed with 1qt of water. DO NOT USE ANY TYPE OF THIN SET ADHESIVE MORTAR AS A BOND COAT TO THE SUBSTRATE WHEN USING SPEEDSLOPE®.

## Curing of Product

- Tile installations\* - 60 minutes
- CUSTOM RedGard® Waterproofing -60 minutes
- CUSTOM RedGard® SpeedCoat - 60 minutes
- Moisture Sensitive Flooring - 6 -12 hours
- Foot traffic - 2-3 Hours
- Light Trade Traffic - 4 hours
- Vehicular Traffic - 12 Hours

\*Moisture sensitive tiles or natural stone may require longer cure times.

## Cleaning of Equipment

Clean with water before material dries.

## Storage

Protect from freezing. Store in a cool, dry area.

## Health Precautions

Use proper personal protection equipment including impervious gloves, such as nitrile, dust masks and safety glasses when mixing/handling product. This product contains Portland cement and free silica. Avoid eye contact and prolonged contact with skin. Wash thoroughly after handling. If eye contact occurs, flush with water for several minutes and consult a physician. Do not breathe dust; wear a NIOSH approved respirator. Refer to Safety Data Sheet for complete safety information.

## Conformance to Building Codes

Installation must comply with the requirements of all applicable local, state and federal code jurisdictions.

## 6. Size & Availability

ITEM CODE	DESCRIPTION	UOM DESC
SS50	USA 50 lb	Bag
CSS50	Canada 50 lb	Bag

## 7. Product Warranty

Obtain the applicable LIMITED PRODUCT WARRANTY at [www.custombuildingproducts.com/product-warranty](http://www.custombuildingproducts.com/product-warranty) or send a written request to Custom Building Products, Inc., Five Concourse Parkway, Atlanta, GA 30328, USA. Manufactured under the authority of Custom Building Products, Inc. © 2026 Quikrete International, Inc.

## 8. Product Maintenance

Properly installed product requires no special maintenance.

## 9. Technical Services Information

For technical assistance, contact Custom technical services at 800-282-8786 or visit [custombuildingproducts.com](http://custombuildingproducts.com).

## Related Products

RedGard® SpeedCoat® Waterproofing Membrane  
 SpeedFinish™ Patching & #038; Finishing Compound  
 CustomFloat® Bedding Mortar  
 Skim Coat & #038; Patch Cement Underlayment

# CUSTOM® SpeedSlope® - Rapid Setting Sloping Mortar

---

## Coverage Chart

50 lb (0.5 cu ft) will cover 5 ft<sup>2</sup> at 1" thickness Five to six 50 lb bags will complete a mortar bed for 3' x 5' shower base