

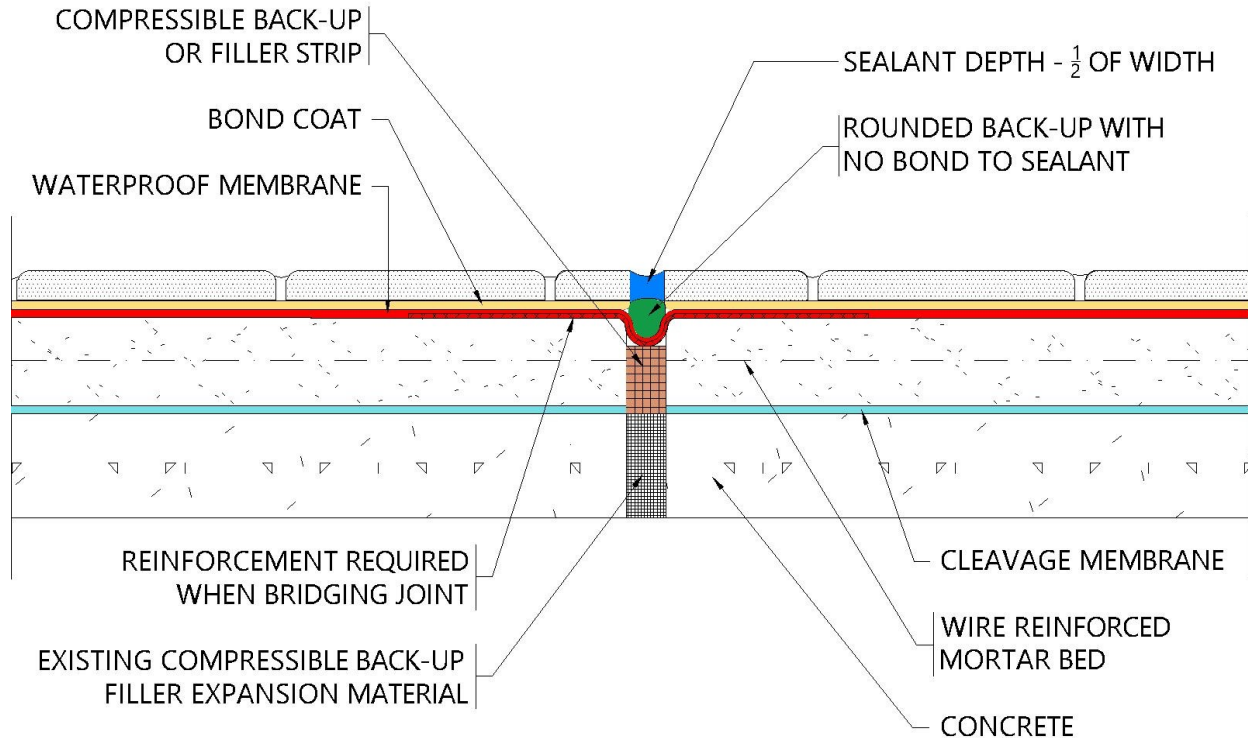
CEJ 171 HW Expansion Joint, Mortar Bed, Cleavage Membrane

As a courtesy to our customers, CUSTOM® Building Products reproduced drawings from the Tile Council of North America Handbook adding a Waterproof Membrane. Vital and important written information is included in the EJ171 section of the handbook. All tile assemblies available on the CUSTOM® website should be used as tools in combination with the information provided in the TCNA Handbook. CUSTOM® Technical Services and CUSTOM® Technical University (CTU), highly recommend securing a copy of the [TCNA Handbook for Ceramic, Glass and Stone Tile Installation](#).

Perimeter and field movement joints within a tile installation are essential and required. These drawings provide general recommendations and guidelines, including the means by which movement joints in the substrates are carried through and incorporated into the tile assembly.

Because of the limitless conditions and structural systems on which tile can be installed, the design professional or engineer shall show specific locations and details of movement joints on project drawings. Preparation of the openings left by the tile contractor and installation of back-up strip and sealant should be specified in the Caulking and Sealant section of the job specification.

CEJ 171 HW Expansion Joint, Mortar Bed, Cleavage Membrane



NOTE: Illustrations shows the necessary components of the tile installation method, including the substrate. This has not been drawn to scale. It is intended to clearly identify and label each component and its placement in the assembly.

*Refer to Product Technical Data Sheet for complete installation instructions and product limitations.

This drawing is listed in Tile Council of North America's (TCNA) Handbook for Ceramic Tile Installation. They are compatible with the drawings in Terrazzo, Tile and Marble Association of Canada's (TTMAC) Handbook. For your convenience, Custom Building Products options are substituted for TCNA's and TTMAC's generic product descriptions. Please refer to the handbooks for complete information.



CUSTOM®

TILE INSTALLATION SYSTEMS