

GROUT SOLUTIONS

 **FUSION PRO**[®]
SINGLE COMPONENT[®] GROUT

 **CEG**[™]

 **prism**

 **PBLYBLEND**



NEW
40 Colors
Available
In All
Grouts



CUSTOM[®]

TILE INSTALLATION SYSTEMS

Grout Colors for Tile and Stone. CUSTOM offers you the best color choices!

#381 Bright White

#11 Snow White

#10 Antique White

#333 Alabaster

#382 Bone

#122 Linen

#101 Quartz

#172 Urban Putty

#380 Haystack

#180 Sandstone

#135 Mushroom



#145 Light Smoke



#186 Khaki



#156 Fawn



#22 Sahara Tan



#45 Summer Wheat



#105 Earth



#50 Nutmeg



#541 Walnut



#183 Chateau



#185 New Taupe



#59 Saddle Brown



#52 Tobacco Brown



#95 Sable Brown



#540 Truffle



#548 Surf Green



#547 Ice Blue



#115 Platinum



#544 Rolling Fog



#545 Bleached Wood



#386 Oyster Gray



#546 Cape Gray



#165 Delorean Gray



#543 Driftwood



#542 Graystone



#09 Natural Gray



#335 Winter Gray

#19 Pewter

#370 Dove Gray

#60 Charcoal

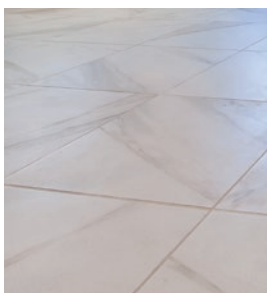
All colors available in all grout types.

Sample colors shown generally approximate the color of the grout. Final installed color may vary.

Color Selection Tips

Complementary

Pick a grout color similar to your tile color to create a uniform look to your floor.



Contrast

When a contrasting grout color is used, your tile grout lines stand out highlighting tile shapes and patterns creating a checkerboard effect.



Use a qualifying system of eligible surface prep and tile setting products from CUSTOM and we'll warrant the entire tile installation for life, including materials, tile and labor to repair in the event of a defect. See CustomBuildingProducts.com for more details.

STAIN PROOF*
AND
COLOR PERFECT*



Fusion Pro® Single Component® Grout

*Fusion Pro will not effloresce, mottle, fade or color shade within the grout joint when installed per manufacturer's directions. Cured Fusion Pro will not stain when exposed to most common, non-corrosive household goods and cleaning agents. All spills should be immediately cleaned from the grout. See website for details.

Coverage

Fusion Pro® Single Component® Grout

Square Feet per 1 Gallon Unit / M² per 3.78 L



TILE SIZE	JOINT WIDTH					
	1/16" (1.6 mm)	1/8" (3 mm)	3/16" (4.8 mm)	1/4" (6 mm)	3/8" (9.5 mm)	1/2" (13 mm)
1" x 1" x 1/4"	55	31	23	19	15	14
25 x 25 x 6 mm	5.1	2.9	2.1	1.8	1.4	1.3
4-1/4" x 4-1/4" x 1/4"	213	110	75	58	41	32
108 x 108 x 6 mm	19.8	10.2	7.0	5.4	3.8	3.0
12" x 12" x 3/8"	393	199	134	101	69	53
300 x 300 x 9.5 mm	36.5	18.5	12.4	9.4	6.4	4.9
18" x 18" x 3/8"	588	296	199	150	101	77
450 x 450 x 9.5 mm	54.6	27.5	18.5	13.9	9.4	7.2
6" x 24" x 3/8"	315	160	108	82	56	43
150 x 600 x 9.5 mm	29.3	18.7	10.0	7.6	5.2	4.0
12" x 24" x 3/8"	523	263	177	134	91	69
300 x 600 x 9.5 mm	48.6	24.4	16.4	12.4	8.5	6.4

CEG-Lite™ Commercial 100% Solids Epoxy Grout

Square Feet / M² per Combined 1 Part A + 1 Part B (9.5 lb./4.3 kg)

Coverage for larger size CEG-Lite (19 lb./8.6 kg) is double the values below. See our website for chart and details.

CEG-Lite™

TILE SIZE	JOINT WIDTH					
	1/16" (1.6 mm)	1/8" (3 mm)	3/16" (4.8 mm)	1/4" (6 mm)	3/8" (9.5 mm)	1/2" (13 mm)
1" x 1" x 1/4"	52	29	21	18	14	13
25 x 25 x 6 mm	4.8	2.7	1.9	1.7	1.3	1.2
4-1/4" x 4-1/4" x 1/4"	200	103	71	54	38	30
108 x 108 x 6 mm	18.6	9.6	6.6	5.0	3.5	2.8
12" x 12" x 3/8"	369	187	126	95	65	50
300 x 300 x 9.5 mm	34.3	17.4	11.7	8.8	6.0	4.6
18" x 18" x 3/8"	552	278	187	141	95	72
450 x 450 x 9.5 mm	51.3	25.8	17.4	13.1	8.8	6.7
6" x 24" x 3/8"	296	150	101	77	53	40
150 x 600 x 9.5 mm	27.5	13.9	9.4	7.1	4.9	3.7
12" x 24" x 3/8"	491	248	166	126	85	65
300 x 600 x 9.5 mm	45.6	23.0	15.4	11.7	7.9	6.0

CEG-IG™ Industrial Grade 100% Solids Epoxy Grout

Square Feet / M² per Unit of Grout (2 Part A + 1 Part B)

TILE SIZE

JOINT WIDTH

	1/16" (1.6 mm)	1/8" (3 mm)	3/16" (4.8 mm)	1/4" (6 mm)	3/8" (9.5 mm)	1/2" (13 mm)
1" x 1" x 1/4" 25 x 25 x 6 mm	103 9.6	58 5.4	43 4.0	36 3.3	29 2.7	26 2.4
4-1/4" x 4-1/4" x 1/4" 108 x 108 x 6 mm	400 37.2	206 19.1	141 13.1	109 10.1	77 7.1	61 5.7
12" x 12" x 3/8" 300 x 300 x 9.5 mm	739 68.6	373 34.6	251 23.3	191 17.7	130 12.1	99 9.2
18" x 18" x 3/8" 450 x 450 x 9.5 mm	1104 102.6	556 51.6	373 34.6	282 26.2	191 17.7	145 13.5
6" x 24" x 3/8" 150 x 600 x 9.5 mm	593 55.1	300 27.9	203 18.9	154 14.3	105 9.7	81 7.5
12" x 24" x 3/8" 300 x 600 x 9.5 mm	983 91.3	495 46.0	333 30.9	251 23.3	170 15.8	130 12.1

Prism® Color Consistent Grout

Square Feet / M² per Unit of Grout (1 Package)

Can be used with 1/16" to 1/2" joints.

See website for details.



Polyblend® Sanded Grout

Square Feet per 25 lb. / M² per 11.34 kg



TILE SIZE

JOINT WIDTH

	1/8" (3 mm)	3/16" (4.8 mm)	1/4" (6 mm)	3/8" (9.5 mm)	1/2" (13 mm)
1" x 1" x 1/4" 25 x 25 x 6 mm	54 5.0	40 3.7	33 3.1	27 2.5	24 2.2
4-1/4" x 4-1/4" x 1/4" 108 x 108 x 6 mm	192 17.8	131 12.2	101 9.4	71 6.6	56 5.2
12" x 12" x 3/8" 300 x 300 x 9.5 mm	348 32.3	234 21.7	177 16.4	121 11.2	92 8.5
18" x 18" x 3/8" 450 x 450 x 9.5 mm	518 48.1	348 32.3	262 24.3	177 16.4	135 12.5
6" x 24" x 3/8" 150 x 600 x 9.5 mm	279 25.9	189 17.6	143 13.3	98 9.1	75 7.0
12" x 24" x 3/8" 300 x 600 x 9.5 mm	461 42.8	310 28.8	234 21.7	158 14.7	121 11.2

Polyblend® Non-Sanded Grout

Square Feet per 10 lb. / M² per 4.5 kg



TILE SIZE

JOINT WIDTH

	1/16" (1.6 mm)	1/8" (3 mm)
1" x 1" x 1/4" 25 x 25 x 6 mm	40 3.7	23 2.1
4-1/4" x 4-1/4" x 1/4" 108 x 108 x 6 mm	156 14.5	80 7.4
12" x 12" x 3/8" 300 x 300 x 9.5 mm	289 26.8	146 13.6
18" x 18" x 3/8" 450 x 450 x 9.5 mm	432 40.1	217 20.2
6" x 24" x 3/8" 150 x 600 x 9.5 mm	232 21.5	117 10.9
12" x 24" x 3/8" 300 x 600 x 9.5 mm	384 35.7	194 18.0

Charts for estimating purposes. Coverage may vary based on installation practices and jobsite conditions. For more tile and joint sizes, use the material calculator at CustomBuildingProducts.com or contact CUSTOM Technical Services at 800-282-8786.

Custom Building Products is North America's leader in flooring preparation products and tile and stone installation systems for residential and commercial projects. When it comes to choosing a quality grout for your next project, trust the company with the right product, performance and color selection. We know grout. Count on CUSTOM.



FUSION PRO
SINGLE COMPONENT™ GROUT

- Stain proof and color perfect*
- Unsurpassed stain resistance
- Never needs sealing
- Easy to spread and clean
- Ultimate color consistency

CEG-IG™

- Formulated for use in harsh environments
- High chemical, stain and temperature resistance
- Water cleanable
- Contains recycled materials which may contribute to LEED® points
- Exceeds ANSI A118.3

CEG-Lite™

- Chemical and stain resistant
- Lightweight formula packs tightly into joints
- Easy to work with — Uniform in color
- Contains recycled LEED® contributing materials
- Exceeds ANSI A118.3



- Color consistent
- No efflorescence
- Cures quickly, develops high early strengths
- Lightweight, excellent handling characteristics
- Exceeds ANSI A118.7



- Polymer fortified for hard, durable, professional results
- Available in Sanded and Non-Sanded
- Resistant to shrinking, cracking and wear
- Exceeds ANSI A118.6



- Suitable for expansion joints, wet and submerged areas
- Interior/Exterior
- Use with stone and tile
- Remains permanently flexible
- ASTM C920/C794 Compliant

CUSTOM may make product modifications at any time without notice. Product specifications are subject to change. Visit custombuildingproducts.com for updated technical data sheets and MSDS information.

800-272-8786 custombuildingproducts.com

©2015 Custom Building Products.

CC6 7/15R



CUSTOM®

TILE INSTALLATION SYSTEMS