

REDGARD® Shower Kit



A complete, fully warranted, fully waterproof system for a **fast, easy** and **durable** way to prepare a shower for tiling.

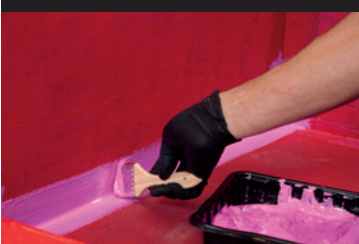
Easy 3 Step Installation



1
Install & waterproof walls



2
Assemble slope & curb



3
Install & waterproof floor

Ready to Tile

Installation Guide

Before You Begin

Here is a short list of things that you should know before installing your new RedGuard® Shower Kit:

- 1. Your Subfloor is key.**
Ensure that your subfloor is sound and ready to accept tile installation. Any gaps in the subfloor around the drain or in other areas must be filled with either wood or cement depending on your installation surface.
- 2. Drain installation is crucial to a water tight installation.**
The drain forms a vital seal between your shower and the plumbing system. It is important to follow the instructions carefully and ensure that enough sealant is applied and that bolts are tightened but not overtightened. Drain parts are orientated from top to bottom so please ensure that you take note to the order and placement of your drain parts for reassembly.
- 3. Gaps between the walls and the slope are not acceptable and could leak.**
Your shower slope is designed so that any one or all sides can be trimmed by up to 3" to accommodate for walls that are out of square. Should you have a situation where you cut the slope wrong or for any other reason a gap occurs between the wall and your slope, fill it with SpeedFinish™ or thin-set mortar prior to the application of RedGuard®.
- 4. Fill any pinholes in the RedGuard® to ensure a watertight shower.**
After the RedGuard® is dry and has turned from pink to red, inspect it closely by looking at it to find any voids that may be present. If pinholes are present simply dab a bit of RedGuard® over them with a paintbrush or roller and continue on.
- 5. Please follow all instructions to ensure leak free performance.**



Finished installation of RedGuard® Shower Kit

For new construction:

Build your shower to accommodate the size of the shower pan you purchased. Include the dimension of the curb in your measurements. See your box for details.

For retrofit:

Measure your shower area carefully and purchase a shower kit that will fit the space. Shower slopes can be cut up to 3" on any side to fit space and drain placement.

Step 1A - Backerboard Installation

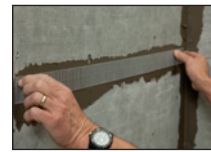


- 1. Place backerboard on walls.**
Starting at the floor, install backerboard such as WonderBoard® Lite on walls. Cut around all obstructions such as pipes and valves with an appropriate tool. Do not use any wall board that

contains gypsum or wood fiber, or is not suitable for direct contact with water. If installing a Shower Niche, cut hole prior to hanging backerboard. Please see Shower Niche installation instructions.



- 2. Secure backerboard with screws.**
Secure the WonderBoard® Lite using backerboard screws or galvanized roofing nails according to board installation requirements.



- 3. Apply backerboard tape to seams.**
Using provided SpeedFinish™ patching compound, coat all backerboard seams, then cover with supplied alkali resistant backerboard mesh tape.

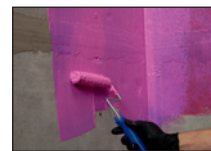


- 4. Finish joints with cement.**
Cover the tape with a smooth coat of SpeedFinish™ cement. Once SpeedFinish™ has dried (approx. 20 minutes) and is a light gray color, RedGuard® may be applied to walls.

Step 1B - Waterproofing Walls



- 1. Precoat corners with RedGuard® liquid waterproofing membrane.**
Using the brush provided, precoat all corners, seams and changes of plane with RedGuard® liquid waterproofing membrane. Wear gloves when handling RedGuard®.



- 2. Apply RedGuard® to wall surfaces.**
Using the roller provided, paint RedGuard® onto walls, overlapping areas pre-coated with the brush. Ensure a thick even coat of RedGuard® is applied over the entire backerboard surface.

RedGuard® is dry when it turns from pink to red, usually 20 minutes.

Step 2 - Fit Slope and Assemble

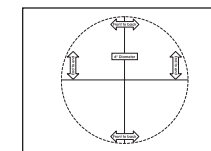


- 1. Verify drain placement.**
The first step to installing your shower is to run your drain line to the desired location. This needs to be consistent with the drain hole in your shower pan. The drain requires a 6 inch diameter

diameter hole cut into the sub-floor. Consult a licensed plumber for proper installation.



- 2. Drain flange installation.**
Fasten the drain flange to the waste pipe and secure it into the hole. The top of the flange should be flush with the sub-floor. Follow local plumbing codes when attaching the drain to existing plumbing.

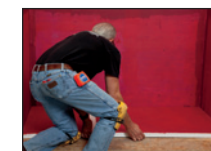


- 3. Follow instructions on drain template to ensure alignment of drain to drain hole in slope.**

If one or more sides of the slope need to be cut to fit space or align to drain, see Step 4.



- 4. Cut shower pan (if necessary).**
Use a table saw or circular saw to cut the slope to the proper dimensions. You may cut up to 3" off any side. Use of safety equipment is required.



- 5. Dry fit pan pieces.**
Fit the pieces of the shower slope into place, red side up, to check for proper alignment. The slope should be snug within backerboard walls and the drain should be aligned.



- 6. Prepare a flat workspace.**
Work on a flat, level surface, such as a workbench or thick sheet of plywood, that will support the entire shower pan when assembled.

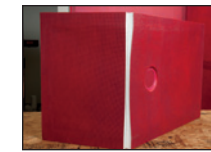


- 7. Align the pieces of the slope and tape together from bottom.**
Turn the slope red-side down and align the two pieces so they can be joined by tape. Ensure that the slope pieces are aligned so that water will

flow toward the drain opening once assembled.

Find the supplied high strength tape and measure the joint from one end of the slope to the other. Lay the tape down over the joint, to connect the two halves of the slope. As you pull away the blue release liner, rub the tape into the surface to ensure good contact.

Step 2 - Fit Slope and Assemble

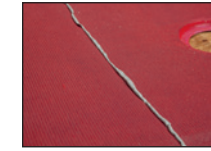


- 8. Set slope on its side.**
Set the taped shower slope on its side with the two pieces at an angle connected by the tape. The tape will act like a hinge.



- 9. Caulk the joint between the 2 pieces.**
Cut the tip off on the caulk tube at $\frac{3}{8}$ of an inch and puncture the foil seal in the tube with a long nail or wire. Always apply a round caulk bead that is between $\frac{1}{8}$ to $\frac{1}{4}$ inch in diameter.

Apply caulk around the entire perimeter of the edge where the two pieces will be connected. The caulk should be within $\frac{1}{8}$ of an inch from the top and bottom surfaces of the slope.



- 10. Press the sides together.**
Place the shower slope red-side up, pressing the two pieces together in the process. Caulk should seep out of the joint at all of the edges.



- 11. Remove excess caulk.**
Gently remove excess caulk with a putty knife, taking care not to smear the caulk excessively. Wipe the knife on an alcohol or mineral spirits soaked rag to keep it clean. Do not use water to smooth or clean tools.



- 12. Tape across the center seam.**
Tape the top surface of the shower slope over the joint. Press the tape into the surface to ensure good contact.



- 13. Prepare for HardCurb™ assembly.**
Two 36 inch curbs are provided in the kit and can be cut to fit your specific installation.



- 14. Measure and mark curb pieces.**
Measure the front of your shower stall from left to right where the curb will be placed. Transfer your measurement to the curb that needs cut.



- 15. Cut curb.**
Using a hand saw or power saw take care to cut the curb straight so that it will fit flush with the wall.

Step 2 – Fit Slope and Assemble



- 16. Apply sealant to join curb pieces.**
Note that each curb has a layer of dense PVC material. This layer is intended to be the top of the curb. When joining the two pieces of curb ensure that they have a similar

orientation with this PVC layer on top.

Begin by applying sealant to the flat factory cut ends of the curb. Apply the sealant in a square around the perimeter of the curb about one half inch inside. Then place an X of sealant inside the square. Double check the orientation of the PVC layer before joining the two pieces together at factory cut ends.



- 17. Press together and wrap joint with tape.**

Strike off any sealant that may have squeezed out with a putty knife provided in the kit, taking care to minimize any smearing of the sealant.

Wrap the curb at the joint with the high strength tape provided with the kit. This tape should be wrapped tightly around all four sides of the curb and be firmly pressed into place to ensure good contact.



- 18. Dry fit.**

Place the newly assembled shower slope and curb back into shower stall to ensure a snug fit. If necessary take a bit more off one end. If the curb is too short, this gap will need to be filled with thin-set mortar.

Step 3A – Install Floor



- 1. Apply sealant to drain flange.**

Make sure all the bolts are fully loosened on the bottom ring of the drain flange in the shower. Apply sealant around the perimeter of the flange using a generous bead.



- 2. Apply thin-set to shower floor.**

Use thin-set mortar to secure the slope to the floor. Spread thin-set using a minimum 1/2" x 1/2" notch trowel to ensure proper coverage. Complete a final comb of the thin-set mortar all in one direction.

Step 3A – Install Floor



- 3. Set the shower slope into place.**

Set the slope into place in the shower, making sure the drain hole is properly aligned. Firmly press the slope into the thin-set to create a secure bond.



- 4. Bolt down drain flange.**

Secure the top of the drain flange to the bottom, bolting it down in a crisscross pattern. Ensure that you do not over-tighten bolts as they can break.



- 5. Apply thin-set to floor for curb.**

Use thin-set mortar to secure the HardCurb™ to the floor. Spread thin-set using a minimum 1/2" x 1/2" notch trowel to ensure proper coverage.



- 6. Apply sealant to edge of slope.**

Use sealant provided to apply a generous bead of sealant to the edge of the shower slope where the curb will attach.



- 7. Set Curb in place.**

Now that thin-set and sealant have been applied, check the orientation ensuring that the PVC side is up. Place the curb into the thin-set and slide toward slope and downward at the same time, ensuring firm contact.



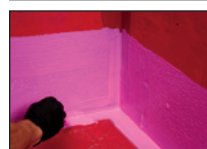
- 8. Apply urethane sealant to perimeter.**

Apply urethane sealant to perimeter of slope working from the outside so as to not disturb the newly set slope. Apply a bead along the perimeter of the slope where it meets the walls and curb. Also bring a bead up and over the top of the curb at each end to ensure a good connection to the wall.



This urethane sealant will remain tacky for 30 minutes before it can be coated with RedGuard®.

Step 3B – Waterproof Floor



- 1. Treat corners and changes of plane with RedGuard®.**

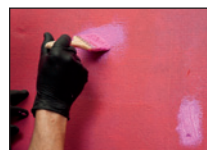
Using a brush provided, coat the area where the backerboard and slope meet with a generous coating of RedGuard®.

Using a roller provided ensure that RedGuard® is spread up a minimum of 6 inches from the floor. Do not forget the inside of the curb needs a coat as well. Wear gloves when handling RedGuard®.



- 2. Apply RedGuard® to taped seams.**

Seams in the pan and curb also need a coat of RedGuard® which can be applied using a brush or roller.



- 3. Inspect and fill pinholes.**

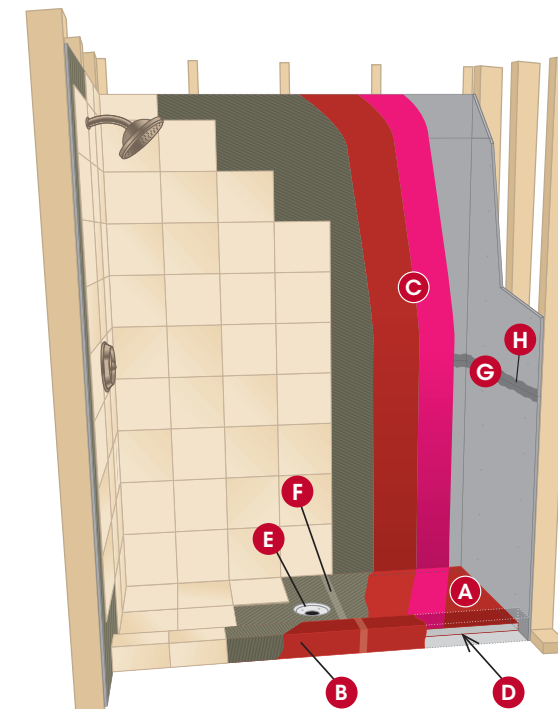
After the RedGuard is dry, inspect all areas for any pinholes. Recoat with a brush and RedGuard® to fill any voids.



- 4. Ready to tile.**

When RedGuard® changes from pink to red, it is dry. You can begin tiling in as soon as 90 minutes.

Shower Kit Includes:



- A** 2-part RedGuard® pre-waterproofed shower slope



- B** 2 RedGuard® pre-waterproofed 4" x 4" x 36" curbs



- C** 2 qty. 1/2 gallon pouches of RedGuard® Waterproofing Membrane



- D** 2 qty. 10.1 oz. tubes of urethane sealant



- E** Drain Assembly—PVC drain fits standard 2" sewer line, square top polished stainless steel strainer



- F** 1 roll of seam assembly tape



- G** 1 roll of alkaline resistant mesh tape



- H** 1 bucket SpeedFinish™ (22 oz.)



- 2 paint brushes



- 2 rollers and handle



- Plastic paint tray



- Plastic putty knife for applying sealant



- 2 pairs of gloves



- Instructional DVD and booklet (English/Español)

Recommended Materials, Tools and Accessories (not included):

Materials

- Additional 36" curb (if shower has only two surrounding walls)
- WonderBoard® Lite backerboard
- Backerboard screws
- VersaBond® Modified Thin-set Mortar

Tools

- Caulking gun
- Circular saw or hand saw
- Level
- Measuring tape
- Scoring knife
- 3/4" notch trowel

Accessories

- Shower niche
- Shower bench



See website for details.



Scan this QR code with your smartphone to be instantly connected to our website and installation videos.

- View complete installation process online: www.custombuildingproducts.com/shower
- Live phone support: (800) 272-8786

