

ShowerSlope™



1. Ensure subfloor is level, well-supported and free of gaps, gouges or debris. Confirm tile shower drain is installed properly and in the right location.



2. Dry fit slope in place to ensure drain alignment and check all edges. Custom shower slopes can be trimmed to accommodate installations up to 1" out of square.



3. Liberally apply a continuous bead of silicone sealant on the top (outer edge) of drain flange. ShowerSlope can be used with most standard ABS & PVC drain assemblies.



4. Spread and comb polymer-modified thinset to the floor with a U-notch trowel. Thinset should be even or slightly above the drain's flange.



5. Place slope in fresh thinset and press down evenly. Ensure slope is firmly bedded and set by carefully walking on top and distributing weight in all areas.



6. Install the drain's clamping ring and tighten all four bolts securely in a cross X pattern.



7. Comb additional thinset where Hard Curb is to be set.



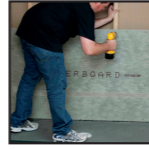
8. Apply silicone sealant to the side of the slope where it meets the curb.



9. Set curb into place and press firmly.



10. Squeeze fat bead of silicone sealant around perimeter of the pan under where backerboard will be set.



11. Set and secure backerboard to studs with screws.



12. Coat all change-of-plane areas with RedGard® Waterproofing and Anti-Fracture Membrane.



13. Coat entire slope and walls with 2 coats of RedGard® Waterproofing and Anti-Fracture Membrane. Your shower should be ready to tile in 60–90 minutes.

ShowerNiche™



1. Start with hole cut in backerboard and confirm studs are properly spaced to allow for niche width.



2. Place niche into opening.



3. Secure niche with 2 backerboard screws on each side.



4. Cover screw heads and all perimeter edges with silicone sealant.



5. Apply 2 coats of RedGard® Waterproofing and Anti-Fracture Membrane. Your shower should be ready to tile in 60–90 minutes.

ShowerSeat™



1. Comb polymer modified thinset on sides and bottom where bench makes contact with walls and base.



2. Press bench firmly in place.



A new approach to shower systems.

**Hard core performance.
Fast, easy installation.**

A complete guide to our Shower System products and an easy, step-by-step guide on how to install them.



CUSTOM®

Shower Installation Systems
Exclusively manufactured by **KBRS®**
INNOVATIVE SHOWER SYSTEMS
HARD CORE.



Shower Installation Systems

Hard core performance. Fast, easy installation.



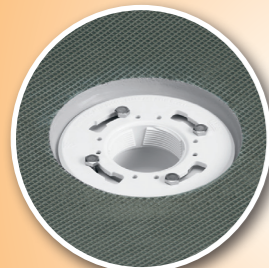
Exclusively manufactured by



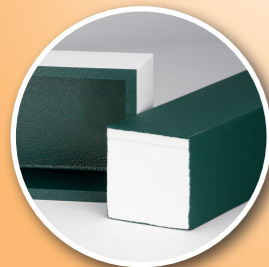
INTRODUCING Custom's industry-leading variety of waterproof shower slopes, seats, niches, curbs and ramps, exclusively manufactured by KBRS. They're not only twice as strong as any other pre-fabricated shower substrate, but also the fastest and easiest to install.



Twice the core strength of typical competitive systems. (We even parked a truck on it.)



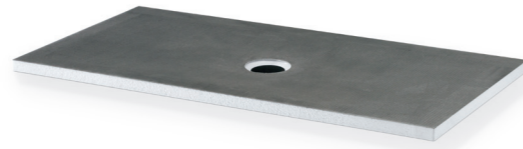
Patent-pending drain flange fits standard drains for faster, easier installation.



PVC^{Core}™ reinforced top for extra durability and strength.

ShowerSlope™

- The strongest mortar-replacement shower slope available
- Composed of high-density EPS, epoxy resins and composite fibers
- Comes in 5 standard sizes plus custom sizes, and can all be cut to fit in the field
- Made for installation with standard ABS & PVC drain assemblies

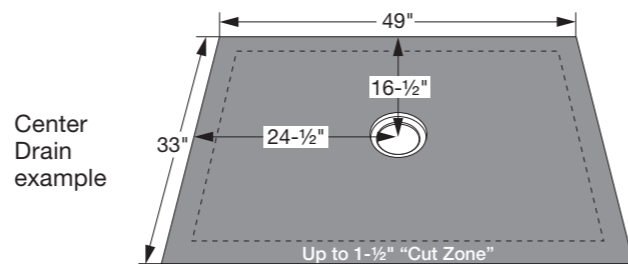


Item	Dimensions	Product Description
SS-3061-C-T1	30" x 61"	Center Drain
SS-3061-LR-T1	30" x 61"	Left-or-Right Drain
SS-3349-C-T1	33" x 49"	Center Drain
SS-3337-C-T1	33" x 37"	Center Drain
SS-3333-N-T1	33" x 33"	Neo-Angle
SS-3661-C-T1	36" x 61"	Center Drain
SS-3661-LR-T1	36" x 61"	Left-or-Right Drain
SS-4549-C-T1	45" x 49"	Center Drain
SS-4545-N-T1	45" x 45"	Neo-Angle

Drain Placement

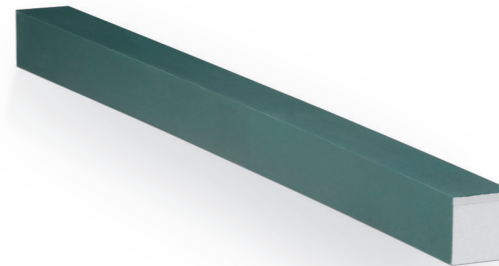
Center Drain	½ width	½ length	
Left or Right Drain	½ width	10-½" length from edge	
Neo-Angle	½ width	½ length	

Each slope edge may be trimmed up to 1-½" for sizing and placement



HardCurb™

- Solid, EPS core won't allow leaking or swelling
- 1/2" top layer of PVC^{Core}™, specifically designed for anchoring heavy-glass shower enclosure hardware
- Can be cut in the field to accommodate nearly any installation



Item	Dimensions	Product Description
RTT-61-HC	4" x 4" x 61"	Tileable Hard Curb

ShowerNiche™

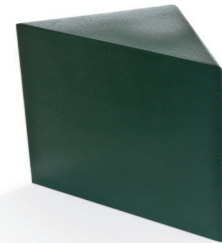
- Guaranteed 100% leakproof
- Attaches directly to studs
- No framing necessary



Item	Dimensions	Product Description
RTT-614-N	6" x 14"	Tileable Single Niche
RTT-1114-N	11" x 14"	Tileable Single Niche
RTT-2214-N	22" x 14"	Tileable Single Niche w/Adjustable Shelf

ShowerSeat™

- Fast and easy to install
- Attaches with thinset, no framing or screws necessary
- In-stock and custom sizes available



Item	Dimensions	Product Description
RTT-1020-CS	10" x 20"	Tileable Ladies Leg Ledge
RTT-1820-CS	18" x 20"	Tileable Corner Seat
RTT-2320-CS	23" x 20"	Tileable Corner Seat
RTT-30-BS	14" x 20" x 30"	Tileable Bench Seat

Tile Drain & Sealant

- Square top strainer makes cutting tiles easy
- Infinitely adjustable strainer makes adjusting for tile thickness easy
- Use either 100% Silicone or Polyurethane sealant to join shower drain flange and where backerboard and curb meet shower slope



Item	Product Description
42237	Tile Shower Drain w/Square Top & Stainless Strainer
42251	Tile Shower Drain w/Square Top & Brushed Nickel Strainer
CCSC09	Commercial 100% Silicone Caulk (10.1 oz Silicone)
SSeal-Poly	ShowerSeal (10.1 oz Polyurethane)

Reference local plumbing codes for proper drain installation



CUSTOM

www.custombuildingproducts.com
800-272-8786